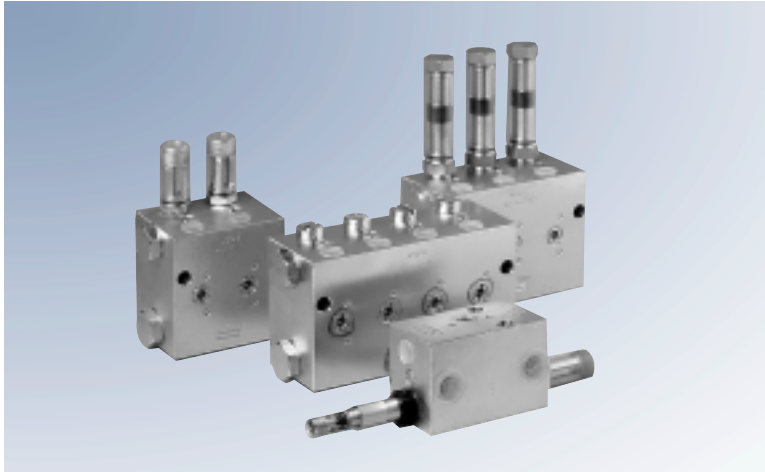


# VSG, VSL, VSKH and VSKV Two-line Metering Devices



features include rust proof material, rust and acid proof material, electrical monitoring, adjusting device with magnetically operated function for rigorous environments, viton seals for high temperature applications, and NPT inlet/outlet threads. Refer to the identification code for model designations to order these devices with the additional features.

All models function on the same principle. The difference between VSL, VSG and VSKH lies in the output per outlet. Model VSKV has the same features as the VSKH with the exception that the outlet ports are located on the front face (vertical positioning). This provides an alternative for applications requiring a different tube orientation. Versions ...-MR (with magnetically operated indication of function) are designed without dynamic seals and can work under extremely adverse ambient conditions: water, dust, high temperature up to 120° C (176° F).



VSG-KR

These high quality, galvanized steel metering devices are designed for high-pressure (up to 400 bar) two-line systems. They can also be used in low to medium-pressure systems. They are available with up to 8 outlets. Each outlet pair is equipped with an indicator pin for visual monitoring. Additional optional

## VSG-KR Models

### VSG-KR

Indicator Pin and Adjustable Output 0–2.2 cm<sup>3</sup> (0–0.13 in<sup>3</sup>)

Connection Thread BSPP	Connection Thread BSPP	Number of Outlets	Connection Thread BSPP	Connection Thread NPTF	Connection Thread NPTF
Carbon Steel Galvanized	Stainless Steel (VA 1.4305/303)		Stainless Steel (VA 1.4571/316 Ti)	Carbon Steel Galvanized	Stainless Steel (VA 1.4305)
620-40022-1	620-40567-1	1		620-40022-2	
620-40015-1	620-40567-2	2	620-40839-2	620-40015-2	
620-40022-3	620-40567-3	3		620-40022-4	
620-40015-3	620-40567-4	4	620-40839-4	620-40015-4	
620-40022-5	620-40567-5	5		620-40022-6	
620-40015-5	620-40567-6	6	620-40839-6	620-40015-6	
620-40022-7	620-40567-7	7		620-40022-8	
620-40015-7	620-40567-8	8	620-40839-8	620-40015-8	

# VSG, VSL, VSKH and VSKV Two-line Metering Devices



## VSG-KD and D

Indicator Pin and Fixed Output\* 2.2 cm<sup>3</sup> (0.13 in<sup>3</sup>) Metering Screw (KD) VSG8-D  
or with Metering Screw only (D) as Shown

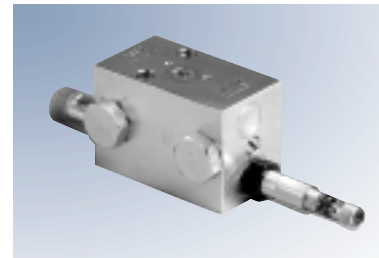
KD		D		
Connection Thread BSPP		Number of Outlets	Connection Thread NPTF	
Carbon Steel Galvanized			Carbon Steel Galvanized	
620-40023-1	620-40025-1	1	620-40023-2	620-40025-2
620-40023-3	620-40025-3	2	620-40023-4	620-40025-4
620-40023-5	620-40025-5	3	620-40023-6	620-40025-6
620-40023-7	620-40025-7	4	620-40023-8	620-40025-8
620-40024-1	620-40026-1	5	620-40024-2	620-40026-2
620-40024-3	620-40026-3	6	620-40024-4	620-40026-4
620-40024-5	620-40026-5	7	620-40024-6	620-40026-6
620-40024-7	620-40026-7	8	620-40024-8	620-40026-8

\*also available: 0.55, 1.1, 1.65 cm<sup>3</sup> (0.0336, 0.067, 0.1 in<sup>3</sup>)

## VSG-KR-NP

Indicator Pin, Proximity Switch for Circular Plug M12 ( 237-13442-4)  
and Adjustable Output 0–2.2 cm<sup>3</sup> (0–0.13 in<sup>3</sup>)

Connection Thread BSPP	Number of Outlets	Connection Thread NPTF
Carbon Steel Galvanized		Carbon Steel Galvanized
620-40733-1	1	
620-40733-2	2	
620-40733-3	3	
620-40733-4	4	
620-40733-5	5	
620-40733-6	6	
620-40733-7	7	
620-40733-8	8	



VSG2KR-NP

Note: High pressure-rated proximity switch is available as a retrofit for  
VSG models beyond series 9905. Part Number: 520-34018-1

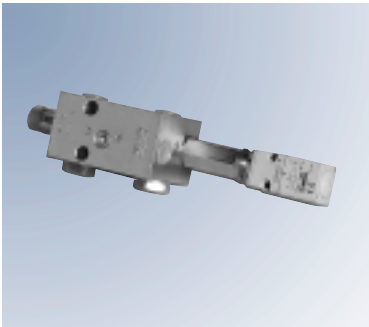
# VSG, VSL, VSKH and VSKV Two-line Metering Devices



VSG6-MR

## VSG-MR Magnet Indicator Pin and Adjustable Output 0–2.2 cm<sup>3</sup> (0–0.13 in<sup>3</sup>)

Connection Thread BSPB	Number of Outlets	Connection Thread NPTF
Carbon Steel Galvanized		Carbon Steel Galvanized
620-40585-5	1	
620-40585-1	2	
620-40585-6	3	
620-40585-2	4	
620-40585-7	5	
620-40585-3	6	
620-40585-8	7	
620-40585-4	8	



VSG2-KR-KS

## VSG-KR-KS Indicator Pin/Limit Switch Adjustable Output 0–2.2 cm<sup>3</sup> (0–0.13 in<sup>3</sup>)

Connection Thread BSPB	Number of Outlets	Connection Thread NPTF
Carbon Steel Galvanized		Carbon Steel Galvanized
620-40027-1	1	620-40027-2
620-40027-3	2	620-40027-4
620-40027-5	3	620-40027-6
620-40027-7	4	620-40027-8
620-40028-1	5	620-40028-2
620-40028-3	6	620-40028-4
620-40028-5	7	620-40028-6
620-40028-7	8	620-40028-8



VSG2-KR-KA

## VSG-KR-KA Indicator Pin & Adapter for Proximity Switch (Thread M12 x 1) Adjustable Output 0–2.2 cm<sup>3</sup> (0–0.13 in<sup>3</sup>)

Connection Thread BSPB	Number of Outlets	Connection Thread NPTF
Carbon Steel Galvanized		Carbon Steel Galvanized
620-40605-1	2	
620-40605-2	4	
620-40605-3	6	
620-40605-4	8	

# VSG, VSL, VSKH and VSKV Two-line Metering Devices

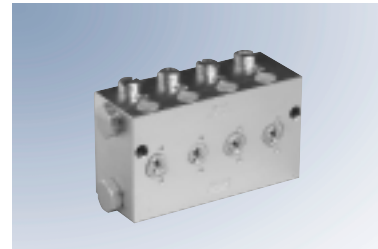


## VSL-KR Indicator Pin and Adjustable Output 0–5 cm<sup>3</sup> (0–0.3 in<sup>3</sup>)

Connection Thread BSPP	Number of Outlets	Connection Thread NPTF
Carbon Steel Galvanized		Carbon Steel Galvanized
620-40062-1	1	620-40062-2
620-40062-3	2	620-40062-4
620-40062-5	3	620-40062-6
620-40062-7	4	620-40062-8
620-40064-1	5	610-40064-2
620-40064-3	6	620-40064-4
620-40064-5	7	620-40064-6
620-40064-7	8	620-40064-8



VSL4-KR



VSL8-D

## VSL-KD & D

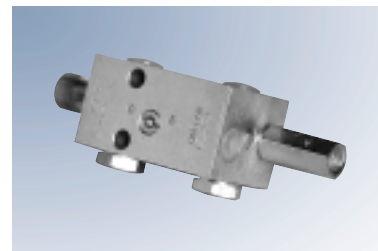
Indicator Pin and Fixed Output\* 5.0 cm<sup>3</sup> (0.3 in<sup>3</sup>) Metering Screw (KD)  
or with Metering Screw only (D) as Shown

KD		Number of Outlets	D	
Connection Thread BSPP			Connection Thread NPTF	
Carbon Steel Galvanized			Carbon Steel Galvanized	
620-40065-1	620-40063-1	1	620-40065-2	620-40063-1
620-40065-3	620-40063-3	2	620-40065-4	620-40063-4
620-40065-5	620-40063-5	3	620-40065-6	620-40063-6
620-40065-7	620-40063-7	4	620-40065-6	620-40063-8
620-40066-1	620-40067-1	5	620-40066-2	620-40067-2
620-40066-3	620-40067-3	6	620-40066-4	620-40067-4
620-40066-5	620-40067-5	7	620-40066-6	620-40067-6
620-40066-7	620-40067-7	8	620-40066-8	620-40067-8

\*also available: 1.25, 2.5, 3.75 cm<sup>3</sup> (0.07, 0.15, 0.228 in<sup>3</sup>)

## VSL-KR-KA Indicator Pin & Adapter for Proximity Switch (Thread M12 x 1) Adjustable Output 0–5 cm<sup>3</sup> (0–0.3 in<sup>3</sup>)

Connection Thread BSPP	Number of Outlets	Connection Thread NPTF
Carbon Steel Galvanized		Carbon Steel Galvanized
620-40637-2	2	
620-40637-4	4	
620-40637-6	6	
620-40637-8	8	



VSL2-KR-KA

# VSG, VSL, VSKH and VSKV Two-line Metering Devices



VSKV5-KR



VSKH5-KR

## VSKH-KR and VSKV-KR Indicator Pin & Adjustable Output 0–5 cm<sup>3</sup> (0–0.3 in<sup>3</sup>)

VSKH (Horizontal) Connection Thread BSPP			Number of Outlets	VSKV (Vertical) Connection Thread NPTF		
Carbon Steel Galvanized	303 Stainless Steel (VA 1.4305)	316Ti Stainless Steel (VA 1.4571)		Carbon Steel Galvanized	303 Stainless Steel (VA 1.4305)	316Ti Stainless Steel (VA 1.4571)
620-27438-1	620-27488-1	620-27766-1	1	620-27442-1	620-27496-1	620-27857-1
620-27418-1	620-27489-1	620-27767-1	2	620-27422-1	620-27497-1	620-27858-1
620-27439-1	620-27490-1	620-27768-1	3	620-27443-1	620-27498-1	620-27859-1
620-27419-1	620-27491-1	620-27769-1	4	620-27423-1	620-27499-1	620-27860-1
620-27440-1	620-27492-1	620-27770-1	5	620-27444-1	620-27500-1	620-27861-1
620-27420-1	620-27493-1	620-27771-1	6	620-27424-1	620-27501-1	620-27862-1
620-27441-1	620-27494-1	620-27772-1	7	620-27445-1	620-27502-1	620-27863-1
620-27421-1	620-27495-1	620-27773-1	8	620-27425-1	620-27503-1	620-27864-1

## Technical Data

Model	VSL	VSG	VSKH	VSKV
output per outlet and stroke (KR versions)	0–5.0 cm <sup>3</sup> (0–0.3 in <sup>3</sup> )	0–2.2 cm <sup>3</sup> (0–0.13 in <sup>3</sup> )	0–1.5 cm <sup>3</sup> (0–0.09 in <sup>3</sup> )	0–1.5 cm <sup>3</sup> (0–0.09 in <sup>3</sup> )
inlet thread	G3/8 (BSPP) 3/8 NPTF	G3/8 (BSPP) 3/8 NPTF	G1/4 (BSPP) 1/4 NPTF	G1/4 (BSPP) 1/4 NPTF
outlet thread	G1/4 (BSPP) 1/4 NPTF	G1/4 (BSPP) 1/4 NPTF	G1/4 (BSPP) 1/4 NPTF	G1/4 (BSPP) 1/4 NPTF
maximum operating pressure	400 bar (5800 psi)			
materials available	carbon steel galvanized			
	stainless steel: 1.4305 / 303			
	stainless steel: 14571 / 316 Ti			
maximum operating temperature	120° C (248° F) for MR and viton versions (KRFKM) 80° C (176° F) for standard versions (KR)			

## Dimensions for Standard KR Versions

Model	Height	Width	Depth
VSG-KR	122 mm (4.86 in)	2 outlet: 44.5 mm (1.78 in) 4 outlet: 76 mm (3.04 in)	54 mm (2.16 in)
VSL-KR	140 mm (5.6 in)	6 outlet: 108 mm (4.32 in) 8 outlet: 140 mm (5.6 in)	
VSKH-KR VSKV-KR	124 mm (4.96 in)	2 outlet: 52 mm (2.08 in) 4 outlet : 80 mm (3.2 in) 6 outlet: 108 mm (4.32 in) 8 outlet: 136 mm (5.44 in)	57 mm (2.28 in)

# Identification Code VSG, VSL, VSKH and VSKV Two-line Metering Devices



VSKV	6	VA	-KR	FKM	-KN			-01	(1.4571)
VSKV	2	VA	-KR						(1.4305)
VSG	4		-KR		-NP				
VSKV	5		-KR		-KS		C		
VSKV	8		-KR		-KN		TU	-A	
VSKH	4	VA			-KS		H		(1.4305)
VSKV	4		-D	0,6	-KS		H		
VSKH	2		-KR						(1.4305)

## Basic Types:

- VSKV = outlet vertical
- VSKH = outlet horizontal
- VSG/VSL = outlet horizontal

## Number of Outlets (max. 8):

## Standard Version

### Steel Body Galvanized

- VA = stainless steel body

## Adjustment Device & Monitoring:

- KR = with indicator pin and infinitely variable adjustment device
- KRFKM = with indicator and infinitely variable adjustment device with viton seals (max. operating temp. 120 °C / 248 °F)
- MR = magnetic indicator and infinitely variable adjustment device
- KD = with indicator pin and metering screw
- D = with metering screw  
0.1; 0.3; 0.6; 0.9; 1.2; 1.5 cm<sup>3</sup>

## Adjustment Device Standard Version Galvanized:

- NP = piston detector
- KN = indicator pin and proximity switch
- KS = indicator pin and limit switch
- KA = indicator pin and adapter  
(proximity switch to be supplied by customer)

- BA = internal abbreviations
- TU = internal abbreviations
- H = internal abbreviations
- C = internal abbreviations

- 01, 02, 03 = two-digit number for special versions
- A = US-version (NPT - thread)

## Stainless Steel (Except VSL Models)

### Material Number:

- 1.4305
- 1.4571 (acid resistant) for VSKH/VSKV/VSG only

# VSG, VSL, VSKH and VSKV Two-line Metering Devices



## Accessories

Part No.	Description
303-17526-2	closure plug for VSG/VSL
420-22139-1	outlet extension VSG (R1/4 x R1/4)
420-22140-1	outlet extension VSL (R1/4 x R1/4)
420-23628-1	outlet extension VSKH (R1/4 x R1/4)
420-23790-1	outlet extension VSKH (R1/4 x R1/4) stainless steel
303-17505-1	metering screw VSG 0.55 cm <sup>3</sup> (0.021 in <sup>3</sup> )
303-17506-1	metering screw VSG 1.10 cm <sup>3</sup> (0.043 in <sup>3</sup> )
303-17507-1	metering screw VSG 1.65 cm <sup>3</sup> (0.065 in <sup>3</sup> )
303-17508-1	metering screw VSG 2.2 cm <sup>3</sup> (0.087 in <sup>3</sup> )
303-17509-1	metering screw VSL 1.25 cm <sup>3</sup> (0.05 in <sup>3</sup> )
303-17510-1	metering screw VSL 2.50 cm <sup>3</sup> (0.099 in <sup>3</sup> )
303-17511-1	metering screw VSL 3.75 cm <sup>3</sup> (0.15 in <sup>3</sup> )
303-17512-1	metering screw VSL 5.00 cm <sup>3</sup> (0.196 in <sup>3</sup> )
223-13052-1	outlet check valve for 6 mm tube*
223-13052-2	outlet check valve for 8 mm tube*
223-13052-3	outlet check valve for 10 mm tube*
421-21288-1	mounting spacer ring 8.5 x 18 x 5

\* Outlet check valves are recommended when secondary progressive metering devices are used, or when the compression volume of the grease (about 2%) in the feed line to the lubrication point exceeds the output per outlet.

Welding mounting plates are available for all metering devices – ask your Lincoln representative for details.